

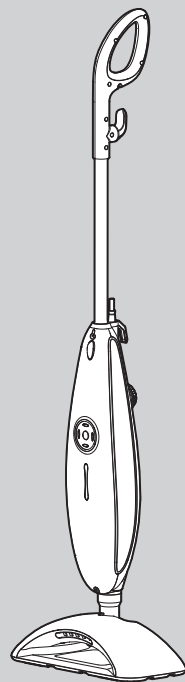
VC720507MUK Rev1

morphy richards[®]
smart ideas for your home

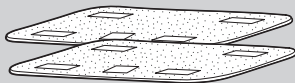


luna
plus Upright and Portable Steam Cleaner

 Please read and keep these instructions for future use



IMPORTANT: To prevent limescale problems which would not be covered by the guarantee, use only deionised, demineralised or distilled water (available from most large supermarkets).



Additional micro-fibre floor cloths may be purchased in packs of two by calling our UK helpline directly on: **0844 873 0726**

For competitions, product hints and tips and more join us at



www.morphyrichards.co.uk/blog



www.facebook.com/morphyrichardsuk



[@loveyourmorphy](https://twitter.com/loveyourmorphy)

www.morphyrichards.com

* Register online for your 2 year guarantee. See back of this instruction book for details. (UK and Ireland customers only)

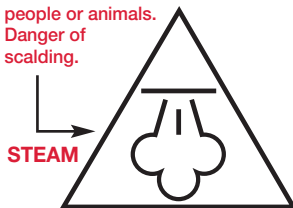
Health and Safety

The use of any electrical appliance requires the following common sense safety rules.
Please read these instructions carefully before using the product.

- **WARNING: Disconnect from the mains supply before carrying out any routine maintenance.**
- This appliance can be used by persons with reduced physical, sensory or mental capabilities, or lack of experience and knowledge, if they have been given supervision or instruction concerning the use of the appliance in a safe way and understand the hazards involved.
- Children shall not play with the appliance.
- Keep the appliance out of reach of children when it is energized or cooling down.

Personal safety

- **WARNING: Never direct steam at electrical components or fittings. If in doubt about the suitability of steam for cleaning an appliance, contact the appliance manufacturer for advice prior to cleaning.**
- **WARNING: Never touch the plug or cable with wet hands.**
- **WARNING: Nozzles and tools will be hot after use. Allow to cool before attempting to remove.**
- **WARNING: Do not discharge the steam towards people or animals. Danger of scalding.**



- **WARNING: Do not use the appliance without the filler cap in place.**
- To protect against fire, electric shock and personal injury, do not immerse cord, plug or cleaner in water or other liquid.
- The plug should be removed from the wall socket after use, before cleaning, filling or changing the accessories, or carrying out user maintenance.

Location

- Do not use or keep this product outside.
- Do not store the appliance near hot surfaces eg. ovens or heating appliances.

Mains cable

- **WARNING: A damaged or severed mains cable fitted with a plug should never be connected to the mains supply. It must be destroyed, as a damaged cable becomes hazardous if connected to a power socket.**
- If the supply cord is damaged, it must be replaced by the manufacturer, its service agent, or similarly qualified person to avoid a hazard.
- Do not allow the mains lead to become strained.

Product safety

- Never modify the steam cleaner in any way.
- Never operate the steam cleaner without water in the tank. Always top-up with water during extended periods of use.
- Never fill the steam cleaner's tank with anything other than deionised, demineralised or distilled water.
- The appliance is not to be used if it has been dropped, if there are visible signs of damage or if it is leaking.

Other safety considerations

- **IMPORTANT: Always test on an inconspicuous area first. Never use on materials that can not resist high temperature, such as dralon, natural fur etc.**
- Do not use any chemical detergents, perfumes, alcohol or descaler etc in water.
- Repairs to electrical appliances are only to be undertaken by trained personnel.
- Unprofessional repairs can be dangerous for users.
- Use only genuine Morphy Richards spare parts and accessories.
- The appliance must not be left unattended while connected to the supply mains.
- This steam cleaner is intended for domestic use only. Misuse or use for commercial or any other purpose will render the guarantee invalid.

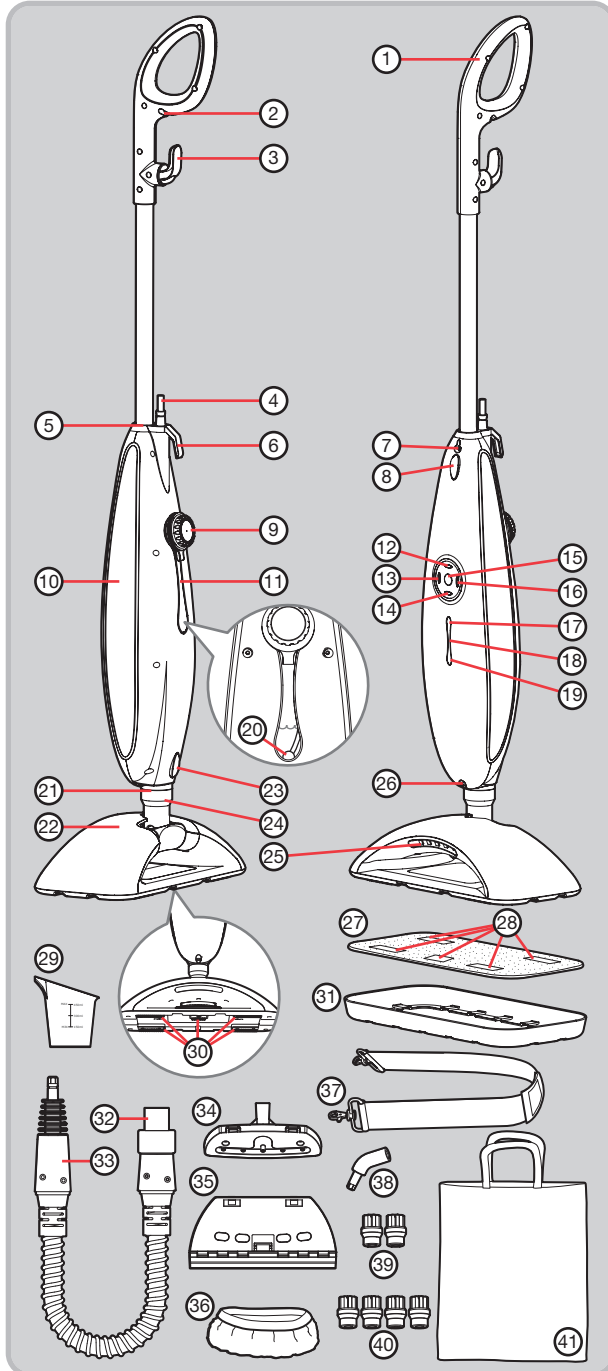
Electrical requirements

- Check that the voltage on the rating plate of your appliance corresponds with your house electricity supply which must be A.C. (Alternating Current).
- **WARNING: This appliance must be earthed.**
- Should the fuse in the mains plug require changing, a 13 amp BS1362 fuse must be fitted.

Contents

Health and safety	2
Electrical requirements	2
Product overview / Features	4
Operating the appliance	5
Dual functionality	5
Upright steam cleaning: assembly	5
Using in upright steam cleaning mode	6 & 7
Using the portable steam cleaner	8
List of attachments for use on the portable steam cleaner	9
The water tank	10
After use	10
Storage	10
Maintenance	10
Contact us	11
Notes	11
Guarantee	12

Product overview



Features

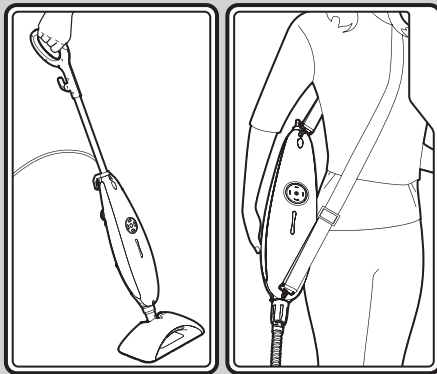
- (1) Handle
- (2) Cord holder
- (3) Upper cord storage hook (rotatable)
- (4) Power cord
- (5) Handle dock
- (6) Lower cord storage hook (fixed)
- (7) Upper shoulder strap hook
- (8) Handle release button
- (9) Water tank filler cap
- (10) Portable steam cleaner
- (11) Water gauge
- (12) Steam level select button
- (13) LED light button 1
- (14) Vibrate button
- (15) On/Off power button
- (16) LED light button 2
- (17) High steam level indicator
- (18) Medium steam level indicator
- (19) Low steam level indicator
- (20) Water tube with brass ball weight attached
- (21) Steam outlet
- (22) Floorhead
- (23) Floorhead release button
- (24) Floorhead neck
- (25) LED lights
- (26) Lower shoulder strap hook
- (27) Micro-fibre floor cloth
- (28) Micro-fibre floor cloth fastening strips
- (29) Filler jug
- (30) Fastening pads (on underside of floorhead)
- (31) Carpet glider
- (32) Extension hose connector
- (33) Extension hose
- (34) Utility nozzle
- (35) Squeegee attachment (attaches to utility nozzle)
- (36) Elasticated utility cloth (attaches to utility nozzle)
- (37) Shoulder strap
- (38) Angled nozzle attachment
- (39) 2x circular brass brush attachment
- (40) 4x circular nylon brush attachment - 2x black / 2x lime green
- (41) Accessory bag

Operating the appliance

IMPORTANT: Please remember that your steam cleaner operates by emitting steam at an increased temperature of 115°C. Always test on an inconspicuous area first. Never use it on objects or surfaces which cannot resist this temperature, or on surfaces with coatings or polishes, or on delicate materials such as dralon, plastic, natural fur or antique items etc.

If in doubt, check carefully on a part of the material where minor marks will not matter.

Dual functionality



Upright steam cleaning Portable steam cleaning

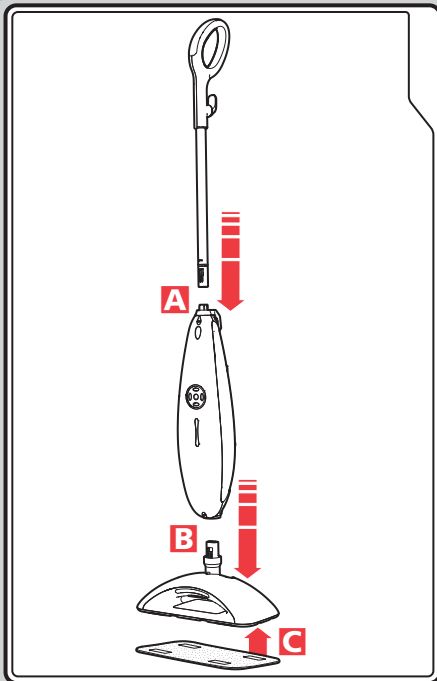
Your steam cleaner can easily be configured into two different cleaning modes:

- Upright steam cleaner for floors and carpets.
- Portable steam cleaner (10) to be worn with a shoulder strap (37) for cleaning vertical or hard to reach surfaces.

Attachments (32-40) can be used on the portable steam cleaner.

IMPORTANT: Keep the product upright (as shown in the image on the left) when using in the portable steam cleaning mode.

Upright steam cleaning: assembly



- Insert the handle (1) onto the portable steam cleaner (10).
- Guide the ridge on the floorhead neck (24) into the groove inside the steam outlet (21). Lower the portable cleaner onto the floorhead (22) until it clicks into place.
- Attach the micro-fibre floor cloth (27) to the floorhead (see step 2 of 'Using in upright steam cleaning mode', page 6).

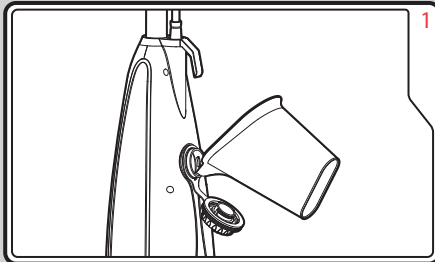
Using in upright steam cleaning mode

IMPORTANT: Before use, hardfloors should be thoroughly swept and carpets should be thoroughly dry vacuumed. However, we recommend that the steam cleaner is not used on:

- bare wooden floors or any surfaces where wood is exposed (as it will absorb moisture and may distort).
- damaged hardfloors or hardfloors with gaps present (as it will absorb moisture and may distort).
- waxed floors - the wax may be removed by the action of the heat and steam.

Do not keep the steam cleaner in one place for an extended period, because the continual heat may cause damage to carpets and laminate flooring.

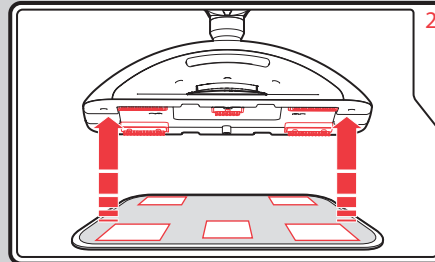
Please disconnect and allow the unit to cool before changing cloths and attachments.



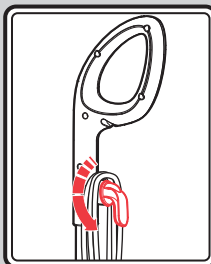
Remove the water tank filler cap (9) by turning it anti-clockwise and pulling it away. Insert the spout of the filler jug (29) into the water tank opening. Fill the water tank to the MAX line on the water gauge (11). To assist with this, the water gauge is illuminated when the product is switched on (see step 4).

IMPORTANT: To prevent limescale build-up in the water tank, never fill the steam mop's tank with anything other than deionised, demineralised or distilled water (available from most leading supermarkets). Any problems arising from limescale will invalidate the product guarantee.

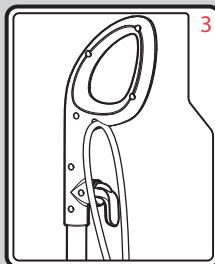
Replace the filler cap firmly.



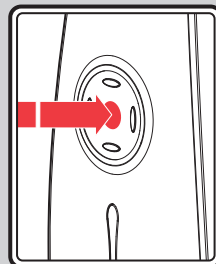
If cleaning hard floors, attach the micro-fibre floor cloth (27) to the fastening pads (30) on the underside of the floorhead (22). The hard-floor cloth has white fastening strips (28) on its upper side to be aligned with the fastening pads on the floorhead.



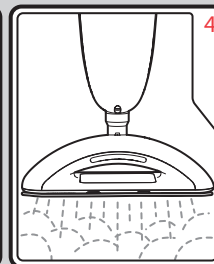
Rotate the upper cord storage hook (3) to quickly release the power cord (4).



Secure the power cord in the cord holder (2).

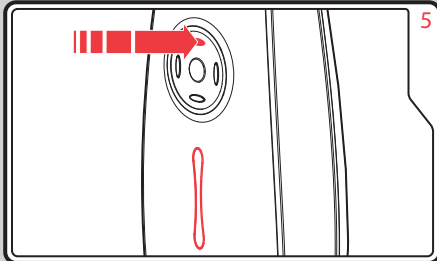


Plug in at the mains outlet and switch on the steam cleaner at the On/Off power button (15). The On/Off power button and the water gauge will illuminate.



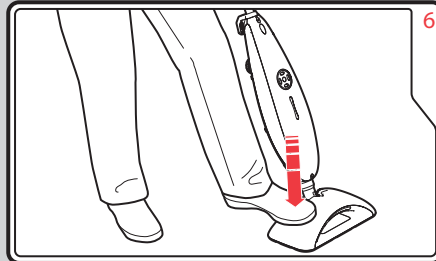
NOTE: A single audible 'beep' will be heard when the product is connected to the mains and when a control button is pressed.

Using in upright steam cleaning mode (continued)



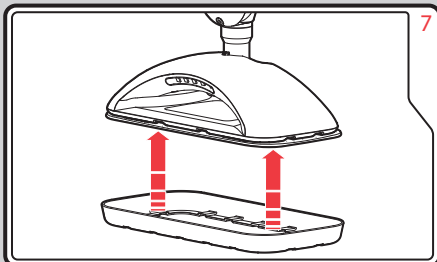
Select the desired steam level by pressing the steam level select button (12) until the indicator light next to your desired level is illuminated:
low steam (19), for use on laminates and wood.
medium steam (18), for use on vinyls or carpets.
high steam (17), for use on ceramics.

Steam will start to be emitted around 30 seconds after the steam level select button is pressed.



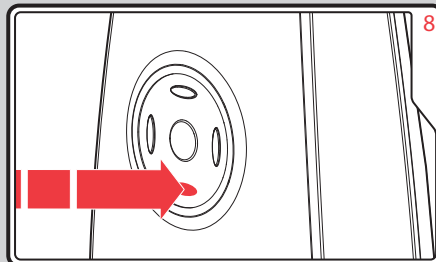
Place the floorhead (22) on the floor. Hold the floorhead to the floor with your foot and tilt the steam cleaner back.

Never hold the steam cleaner continuously in one place, as excess moisture and heat may adversely affect some floor surfaces.



If cleaning carpets, rest the floorhead (22) with the micro-fibre floor cloth (27) attached into the carpet glider (31) to make it easier to move the floorhead across the carpet.

NOTE: The carpet glider is designed to make it easier to move the floorhead across the carpet and is intentionally a loose fit on the floorhead.



If attempting to steam clean a heavily soiled area on either carpet or hard floor, it may be necessary to operate the vibrate function. This will vibrate the floorhead (22) to help agitate the dust and dirt. To use this function, press the vibrate button (14). To stop the vibrate function, press the vibrate button again.

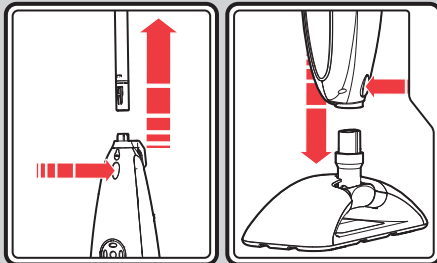


To enable you to more easily see the areas in need of cleaning, you may use the LED lights (25) situated in the front of the floorhead (22). Press LED light button 1 (13) to illuminate the area, and press LED light button 2 (16) if additional illumination is required.

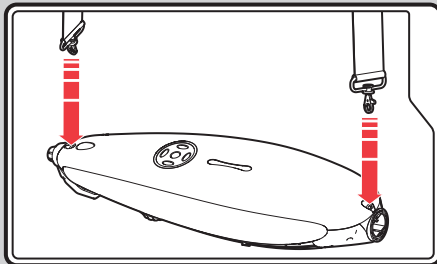
Using the portable steam cleaner

This function is ideal for cleaning vertical surfaces and hard to reach places.

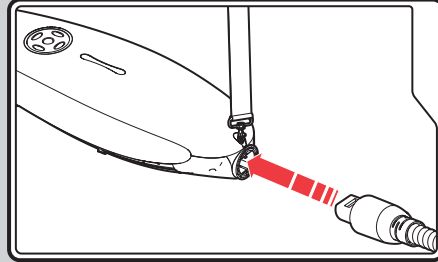
1. Ensure the cleaner is turned off by pressing the On/Off power button (15), and the plug is disconnected from the mains supply.
2. If using from storage, release the power cord (4) from the cord storage hooks (3 & 6) (see step 3 of 'Using in upright steam cleaning mode', page 6, but do not secure the power cord in the cord holder (2)).
3. Release the handle (1) from the portable steam cleaner (10) by pressing the handle release button (8), then lift the handle out from the handle dock (5).



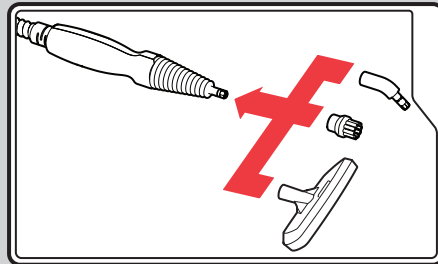
4. Next, release the floorhead (22) from the portable steam cleaner by pressing the floorhead release button (23), then pull the floorhead out from the steam outlet (21) on the bottom of the portable steam cleaner.
5. Attach the shoulder strap (37) to both of the shoulder strap hooks (7 & 26) on the portable steam cleaner, ensuring they are securely attached.



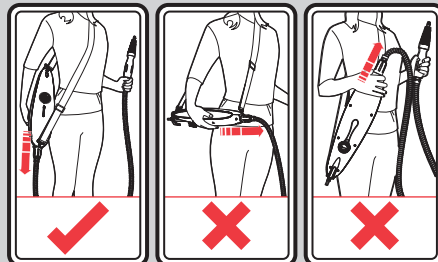
6. Attach the extension hose (33) by pushing the extension hose connector (32) into the steam outlet on the bottom of the portable steam cleaner. Guide the ridge on the extension hose connector into the groove inside the steam outlet.



7. Attachments (34, 38, 39 & 40) can now be pushed firmly onto the nozzle end of the extension hose.



NOTE: The portable cleaner is designed to be carried by hanging the shoulder strap over your shoulder. Ensure the cleaner body remains upright throughout use (as shown - the arrows denote the direction of the steam flow) - this will enable it to produce steam correctly. Holding the steamer horizontally or upside down may prevent steam from being produced, or alternatively being emitted directly at your body.



At the start of each use, water may drip from the extension hose - this is normal.

Warning

WARNING: Switch OFF and unplug before changing nozzles. After use, nozzles will be very hot, allow to cool before handling.

Never block any nozzle eg by holding against a surface being cleaned.

Only ever use demineralised, deionised or distilled water to prevent limescale forming.

List of attachments for use on the portable steam cleaner

Shoulder strap (37) for easy portability.

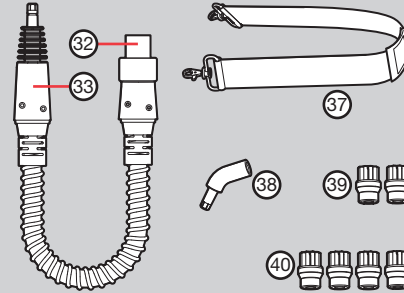
Extension hose (33) this attachment is the base attachment for all portable accessories supplied with the product as it has a steam nozzle attached.

It can also be used alone to clean places or crevices that are not easily accessible.

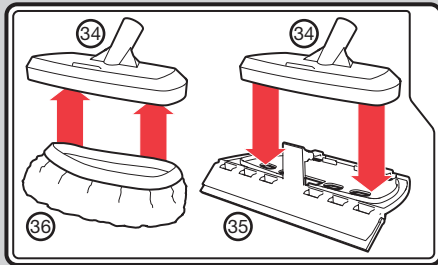
Angled nozzle attachment (38) to clean sanitary ware such as toilet bowls, taps or drain covers. Point it directly at non-permanent stains on carpets or upholstery whilst holding a clean cloth near the stained area to capture any loosened dirt.

4x circular nylon brush attachments (40) in two colours to allow certain brushes to be kept for certain tasks (eg. bathroom and kitchen brushes). Use the brushes to remove stubborn stains in the bathroom, kitchen etc.

2x circular brass brush attachments (39) to remove more stubborn stains on ovens or BBQs etc. Only ever use the brass brush on hard metal surfaces, eg. stainless steel.

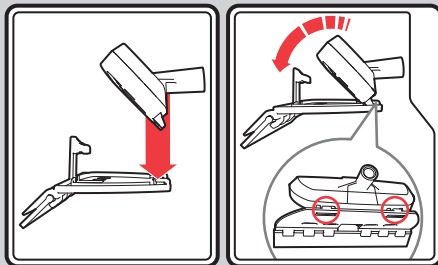


Utility nozzle (34) once attached to the extension hose (33), the utility nozzle is the base attachment for attaching all the following accessories:

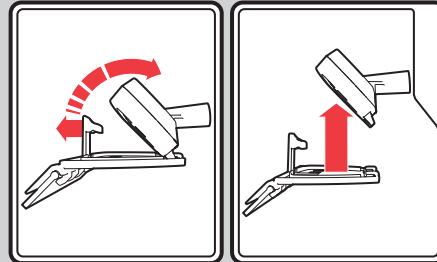


Elasticated utility cloth (36) for covering the utility nozzle when cleaning upholstery and bedding or delicate areas.

Squeegee attachment (35) can be attached to the utility nozzle by inserting the hooks at the back of the squeegee attachment into the loops on the back of the utility nozzle, then secure the front of the utility nozzle into the locking clip on the top of the squeegee attachment (as shown).



Remove the squeegee attachment after use by holding the locking clip forward. The utility nozzle should still be hooked into the loops on the rear of the squeegee attachment, pivot the utility nozzle up and unhook from the loops to lift it away.



The squeegee attachment is ideal for cleaning tiled or glass areas such as windows or mirror panels. To clean windows, start at the top, press the squeegee attachment to the surface and drag downwards in straight passes from top to bottom. Wipe the rubber blade and the bottom edge of the window dry after each pass. For small window panels, remove the squeegee attachment and spray the steam directly onto the surface. Use the squeegee attachment separately to wipe away the moisture.

WARNING: Do not use on very cold glass, as the sudden temperature change may crack the glass.

The water tank

Water tube with brass ball weight attached (20)

The brass ball weight inside the water tank is attached to the end of the suction hose. The ball is weighted and designed to freely move around the water tank of the portable steam cleaner (10). If the ball does get stuck outside the water level, gently shake the product until it comes free. The ball must remain in the water so steam can be generated regardless of the orientation of the portable steam cleaner.

Rinsing the water tank

Regularly rinse the water tank to release any deposits that have collected on the bottom of the tank. Only use deionised, demineralised or distilled water (available from most large supermarkets) and fit the filler cap to allow vigorous rinsing. Empty the water tank by removing the filler cap (9) and pouring out the water.

To facilitate rinsing the water tank, we recommend removing the handle (1) and floorhead (22) (see points 3 and 4 of 'Using the portable steam cleaner', page 8).

Allow the inside of the water tank to dry out before replacing the filler cap.

After use

Follow the two maintenance steps below after every use.

1. Switch the cleaner off and unplug from the socket. Place immediately on a suitable surface (eg. tiled floor) where the residual heat/moisture in the floor nozzle/cloth will not affect the surface. Wait until the cleaner has cooled down completely.
2. Empty the water tank by removing the filler cap (9) and pouring out the water.

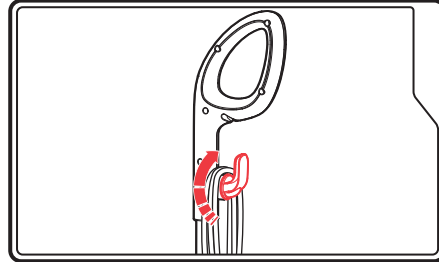
To facilitate emptying the water tank, we recommend removing the handle (1) and floorhead (22) (see points 3 and 4 of 'Using the portable steam cleaner', page 8).

Allow the inside of the water tank to dry out before replacing the filler cap.

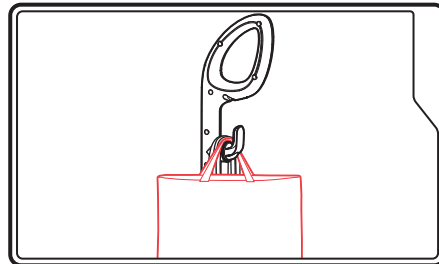
Storage

We recommend storing the steam cleaner with the carpet glider (31) attached, but the cloths removed to minimise the likelihood of any water leaking onto surfaces.

Wrap the power cord (4) around the two cord storage hooks (3 & 6), rotating the upper cord storage hook (3) upwards to secure the power cord in place.



Put all accessories into the accessory bag (41) and hang the bag from the upper cord storage hook.



Maintenance

WARNING: Always unplug the steam cleaner from the mains supply before undertaking any maintenance procedures.

Overall maintenance

Your cleaner is manufactured to withstand normal day-to-day use, but an occasional wipe over with a damp cloth will help maintain it. Abrasive cleaners should not be used.

Cleaning the cloths

The micro-fibre floor cloth (27) and the elasticated utility cloth (36) can be machine washed (40°C max). For heavy soiling, soak the cloths in warm water and detergent or a mild stain remover.

IMPORTANT: Do not use bleach or fabric softener.

Allow cloths to completely dry before storing.

Replacement cloths can be purchased by calling our UK helpline directly on: 0844 873 0726 or logging onto www.morphyrichards.com.

Maintaining the attachments

Dirt and blockages should be regularly removed from the attachments to help prolong their usage.

Contact us

Helpline

If you are having a problem with your appliance, please call our Helpline, as we are more likely to be able to help than the store you purchased the item from.

Please have the product name, model number and serial number to hand when you call to help us deal with your enquiry quicker.

UK Helpline: **0844 871 0960**
IRE Helpline: **1800 409 119**
Spares: **0844 873 0726**

Talk To Us

If you have any questions or comments, or want some great tips to help you get the most out of your products, join us online:

Blog: www.morphyrichards.co.uk/blog
Facebook: www.facebook.com/morphyrichardsuk
Twitter: www.twitter.com/loveyourmorphy
Website: www.morphyrichards.com

Notes

<hr/>	<hr/>
<hr/>	<hr/>
<hr/>	<hr/>
<hr/>	<hr/>
<hr/>	<hr/>
<hr/>	<hr/>
<hr/>	<hr/>
<hr/>	<hr/>
<hr/>	<hr/>
<hr/>	<hr/>
<hr/>	<hr/>
<hr/>	<hr/>
<hr/>	<hr/>
<hr/>	<hr/>
<hr/>	<hr/>
<hr/>	<hr/>
<hr/>	<hr/>
<hr/>	<hr/>
<hr/>	<hr/>
<hr/>	<hr/>
<hr/>	<hr/>
<hr/>	<hr/>
<hr/>	<hr/>

VC720507MUK Rev1 01/14

Registering your 2 year guarantee

Your standard 1 year guarantee is extended for an additional 12 months when you register the product within 28 days of purchase with Morphy Richards. If you do not register the product with Morphy Richards within 28 days, your product is guaranteed for 1 year. To validate your 2 year guarantee, register with us online at

www.morphyrichards.co.uk

Or call our customer registration line

UK 0844 871 0962

IRE 1800 409 119

N.B. Each qualifying product needs to be registered with Morphy Richards individually.

Please note that the 2 year guarantee is only available in the UK and Ireland. Please refer to the 1 year guarantee for more information.

Your 1 year guarantee

To qualify for the 1 year guarantee, the appliance must have been used according to the instructions supplied.

It is important to retain the retailer's receipt as proof of purchase. Staple your receipt to this back cover for future reference.

Please quote the following information if the product develops a fault. These numbers can be found on the base of the product.

Model no. Serial no.

All Morphy Richards products are individually tested before leaving the factory. In the unlikely event of any appliance proving to be faulty within 28 days of purchase, it should be returned to the place of purchase for it to be replaced.

If the fault develops after 28 days and within 12 months (2 years if registered) of original purchase, you should contact the Helpline number quoting Model number and Serial number on the product, or write to Morphy Richards at the address shown.

You may be asked to return a copy of proof of purchase.

Subject to the exclusions set out below (see Exclusions), the faulty appliance will then be repaired or replaced and dispatched usually within 7 working days of receipt.

If you suspect a fault, follow the simple checks detailed below before retrying the appliance or calling the helpline.

- Check the steam outlet is not blocked.
- Check the plug is firmly in the socket.
- Check the socket is working by trying another appliance.
- Check the fuse in the plug.

If, for any reason, this item is replaced during the 1 year guarantee period, the guarantee on the new item will be calculated from original purchase date. Therefore it is vital to retain your original till receipt or invoice to indicate the date of initial purchase.

This appliance is intended for domestic use only. Misuse or use for commercial or any other purpose will render the guarantee invalid.

Exclusions

Morphy Richards shall not be liable to replace or repair the goods under the terms of the guarantee where:

- 1 The fault has been caused or is attributable to accidental use, misuse, negligent use or used contrary to the manufacturer's recommendations or where the fault has been caused by power surges or damage caused in transit.
 - 2 The appliance has been used on a voltage supply other than that stamped on the products.
 - 3 Repairs have been attempted by persons other than our service staff (or authorised dealer).
 - 4 The appliance has been used for hire purposes or non domestic use.
 - 5 The appliance is second hand.
 - 6 Morphy Richards reserves the right not to carry out any type of servicing under the guarantee at its discretion.
 - 7 The guarantee excludes consumables such as cloths and brushes.
 - 8 Any problems arise as a result of limescale build-up.
- This guarantee does not confer any rights other than those expressly set out above and does not cover any claims for consequential loss or damage. This guarantee is offered as an additional benefit and does not affect your statutory rights as a consumer. Morphy Richards products are intended for household use only. See usage limitations within the location safety instructions.

Disclaimer

Morphy Richards has a policy of continuous improvement in product quality and design. The company, therefore reserves the right to change the specification of its models at any time.



For electrical products sold within the European Community. At the end of the electrical products useful life, it should not be disposed of with household waste. Please recycle where facilities exist. Check with your Local Authority or retailer for recycling advice in your country.

**IF YOU ARE HAVING A PROBLEM
WITH ONE OF OUR PRODUCTS,
CALL OUR HELPLINE:**

UK: 0844 871 0960
EIRE: 1800 409 119
SPARES: 0844 873 0726

morphy richards

The After Sales Division
Morphy Richards Ltd
Mexborough,
South Yorkshire,
England, S64 8AJ

www.morphyrichards.com

